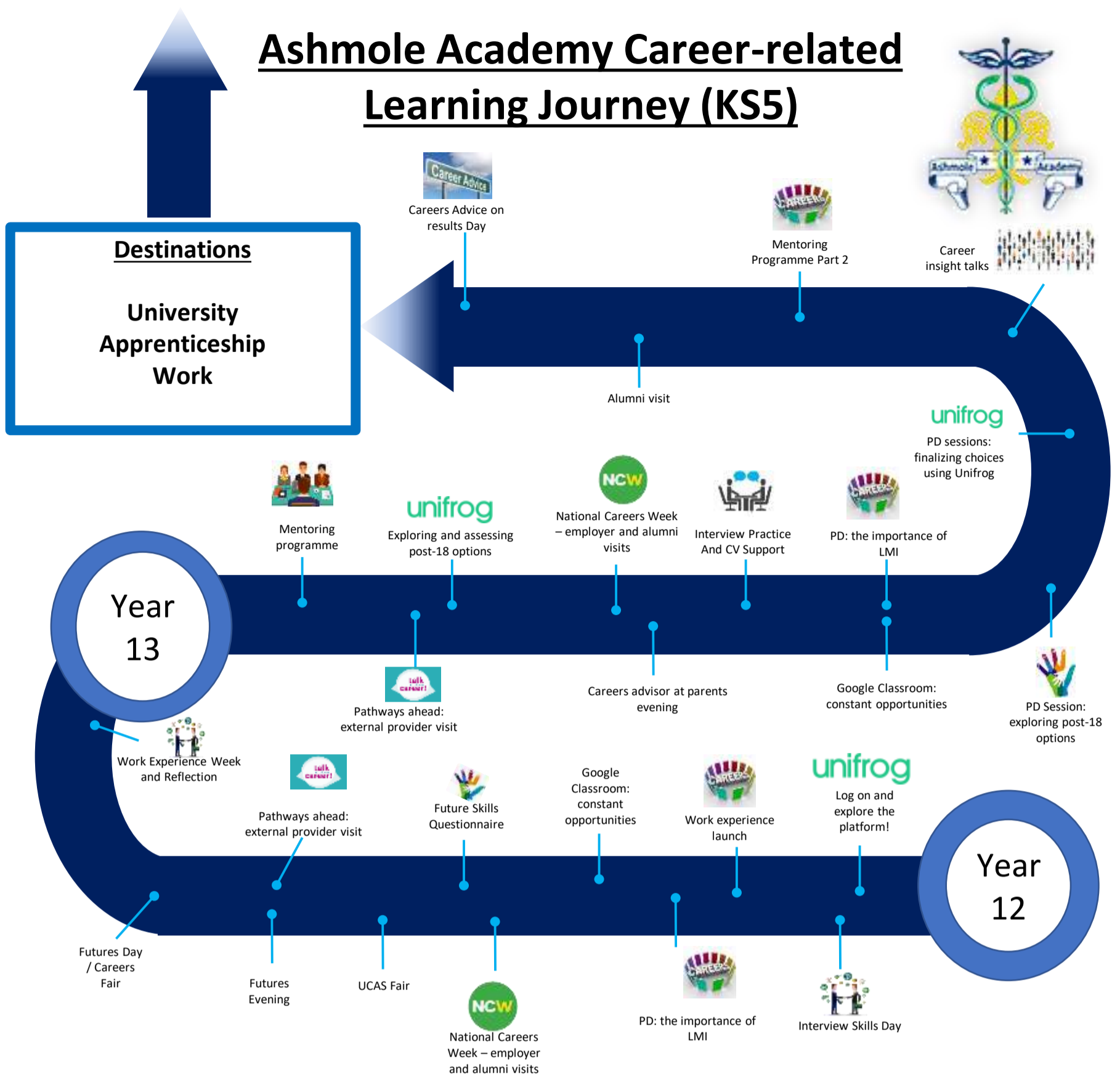


# Ashmole Academy Career-related Learning Journey (KS5)



## Labour Market Information

Barnet

### Employment

Most people work in:

- Health
- Education
- Retail
- Accommodation and food services
- Professional, scientific and technical

Examples of workplaces:

- Hospitals
- Schools
- Shops
- Hotels
- Universities
- Medical centres
- Prisons
- Supermarkets
- Restaurants
- Laboratories
- Care homes
- Online
- Online
- Cafés
- Law firms

Average annual salary: **£35,959**

National minimum wage:

- £12.21 (if you are 21 and over (per hour))
- £10 (if you are 18 to 20 (per hour))
- £7.55 (if you are under 18 (per hour))

### What Is LMI And What Types Of LMI Are There?

LMI stands for Labour Market Information.

In short, it refers to any relevant information about the current state of the jobs market.

**LMI can include information about:**

- The industries and businesses that operate in a certain location.
- The types of jobs that exist and what they involve.
- How many of those jobs there are.
- The skills that are currently, or will be, in high demand.
- Commute and travel to work patterns.
- Typical rates of pay.
- Career progression opportunities.

Find out more:

- By accessing the Careers Section on the school website
- Using Unifrog and going to 'Career Pathways'
- Using the Ashmole Careers Booklet